


SCOTSMAN

AIR, WATER, & REMOTE COOLED MODULAR CONTOUR CUBERS

50 HZ

CME1656

VOLUME PRODUCTION • 24 HOUR

 Certified & rated in accordance with ARI standard 810-95	Air-Cooled		Water-Cooled		Remote	
	70°/50° lbs./kg.	90°/70° lbs./kg.	70°/50° lbs./kg.	90°/70° lbs./kg.	70°/50° lbs./kg.	90°/70° lbs./kg.
CME1656	1440/654	1125/511	1440/654	1323/601	1395/634	1260/572



Value the Difference of CM³ Ice Machines:

- CM³ series offers the lowest lifetime operating costs based on lower water and electrical usage. Combine that with a competitive purchase price and the best warranty in the industry and you have the lowest lifetime ownership cost. Period.
- AutoIQ™ Control System monitors and controls the ice machines' functions to ensure consistent ice production and reduce operating costs.
- CM³ Evaporator is a hot tin dipped, molecularly bonded plate that has been field tested and proven 99.4% reliable over 5 years.
- Rust-free Polyethylene Base and Food Zone is insulated with 1-1/2" of foam which keeps water and food zone cool to reduce operating costs and is backed by a Lifetime Rust-Free Warranty.
- Contemporary styling and stainless steel finish make the CM³ a perfect addition to any operation.

WARRANTY See your dealer for complete warranty details.

- Parts and labor on all components.
- Limited Lifetime Rust Free Warranty on Food Zone

BIN OPTIONS:




BIN: BH900



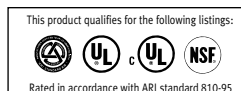
BIN: BH1366



APPROX. CUBE SIZE:
1 3/8" x 1 3/8" x 5/8" THICK

SCOTSMAN MODULAR BINS			 Certified & rated in accordance with ARI standard 820-95		
Model Number	Dimensions W"xD"xH"	ARI Bin Capacity	Application Capacity	Finish	Ship Weight lbs./kg.
BH900S	48.2 x 33.75 x 44	740 LBS.	940 LBS.	SS	185/84
BH1366S	56 x 40 x 53	1030 LBS.	1320 LBS.	SS	380/172
BH1666S	60 x 40 x 60	1250 LBS.	1600 LBS.	SS	410/186

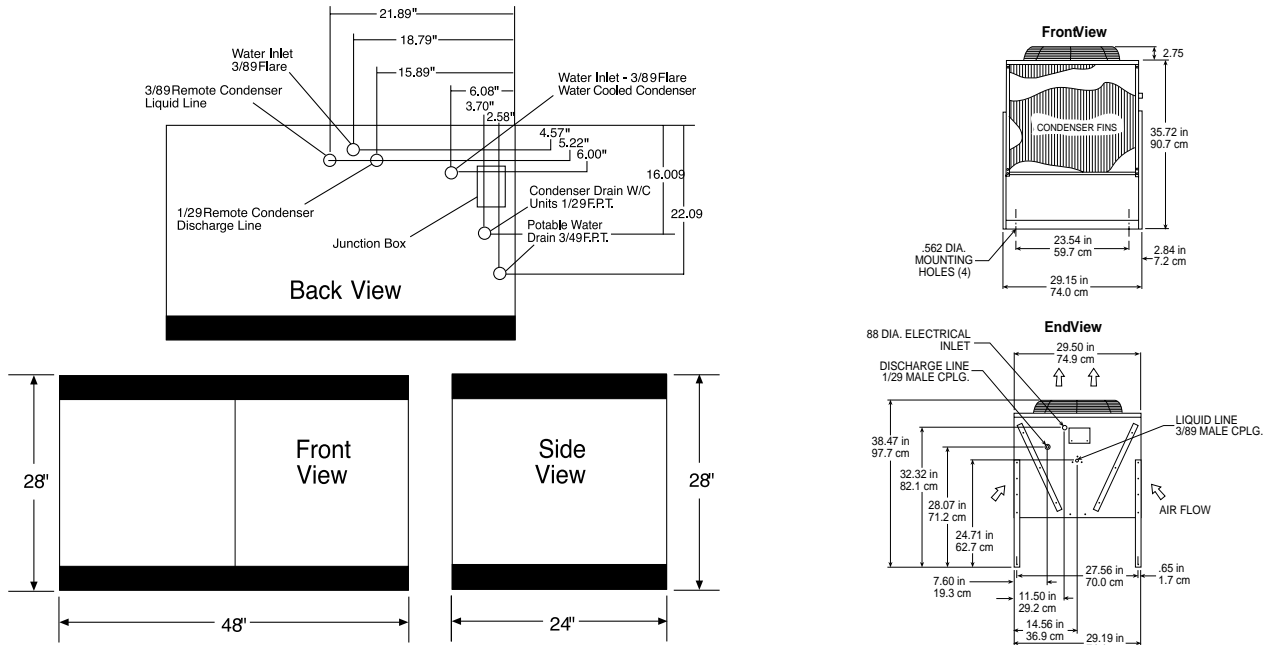
(SS) Stainless Steel with Polyethylene liner.



Scotsman
A WELBILT® COMPANY



Ice Machine Specifications



INSTALLATION NOTE: Allow 6" minimum space at back and sides for ventilation and utility connections.

All models: Dimensions: W x D x H Unit: 48" x 24" x 28" Shipping Carton: 51" x 27" x 31"

Model Number	Condenser Unit	Basic Electrical Volts/Hz/Phase	Max. Fuse Size or HACR Circuit Breaker	Comp. HP	Circuit Wires	Min. Circuit Ampacity	BTU's per hour	Shipping Weight lbs./kg.
CME1656AS-6D	AIR	230/50/1	30	3.5	2	26.7	24,000	365/166
CME1656WS-6D	WATER	230/50/1	30	3.5	2	23.9	24,000	365/166
CME1656RS-6D	REMOTE	230/50/1	30	3.5	2	24.9	24,000	370/168

All units with Stainless Steel finish.

OPTIONS:
Stacking Kit: Number KSCME6-LG

REMOTE CONDENSER— Comes with adjustable legs
Dimensions: W x D x H: 29.5" x 29.5" x 38.47"

Model Number	For Use With	Cond. Unit	Finish Basic	Electrical Volts/Hz/Phase	No. of Wires	Min. Circuit Ampacity	Max Fuse Size or HACR Circuit Breaker
ERC411-32A	(1) CME1656R	Air	Galvanized	208-230/60/1	2	1.25	15

Scotsman's ice machines are not designed for outdoor installations. Scotsman remote condensers are designed for outdoor installations.

PRE-CHARGED REFRIGERANT TUBE KITS: 25-Foot, RTE25 • 40-Foot, RTE40 • 75-Foot, RTE75, R-404 Refrigerant

Machine requires voltage indicated on rating name plate. Failures caused by improper voltage are not considered factory defects. Extended periods of operation at temperatures exceeding limitations constitutes misuse under the terms of Scotsman Manufacturer's Limited Warranty, resulting in a loss of warranty coverage. Specifications and design are subject to change without notice.

Consult Your Local SCOTSMAN Representative At:

IMPORTANT OPERATING REQUIREMENTS:

	Minimum	Maximum
Air Temperatures	50°F (10°C)	100°F (37.7°C)
Water Temperatures	40°F (4.4°C)	100°F (37.7°C)
Remote Cond. Temps	-20°F (-28.9°C)	120°F (48.9°C)
Water Pressures	20 PSIG	120 PSIG
Electrical Voltage	-5%	+10%

YOU'LL VALUE THE DIFFERENCE™

775 Corporate Woods Parkway • Vernon Hills, IL 60061 • 1-800-SCOTSMAN • (847) 913-9844
Visit our website at: www.scotsman-ice.com • E-mail: customer.service@scotsman-ice.com

Scotsman[®]
A WELBILT[®] COMPANY